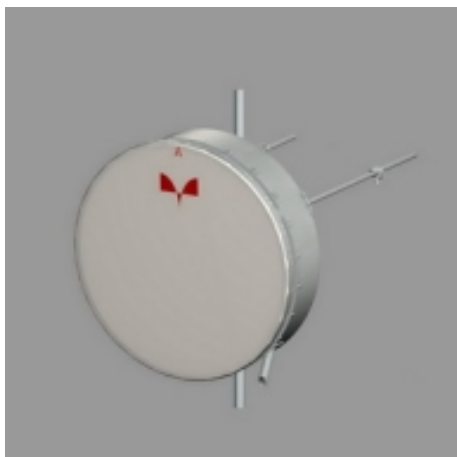


# Antenna HP 24-044 D

&nbsp;Antenna HP 24-044 D



## General Specifications

Diameter	2.4 m
Standard Colour	RAL 7030
Shroud	High profile
Antenna Input	interface for IEC waveguide R 48
Polarization	Dual

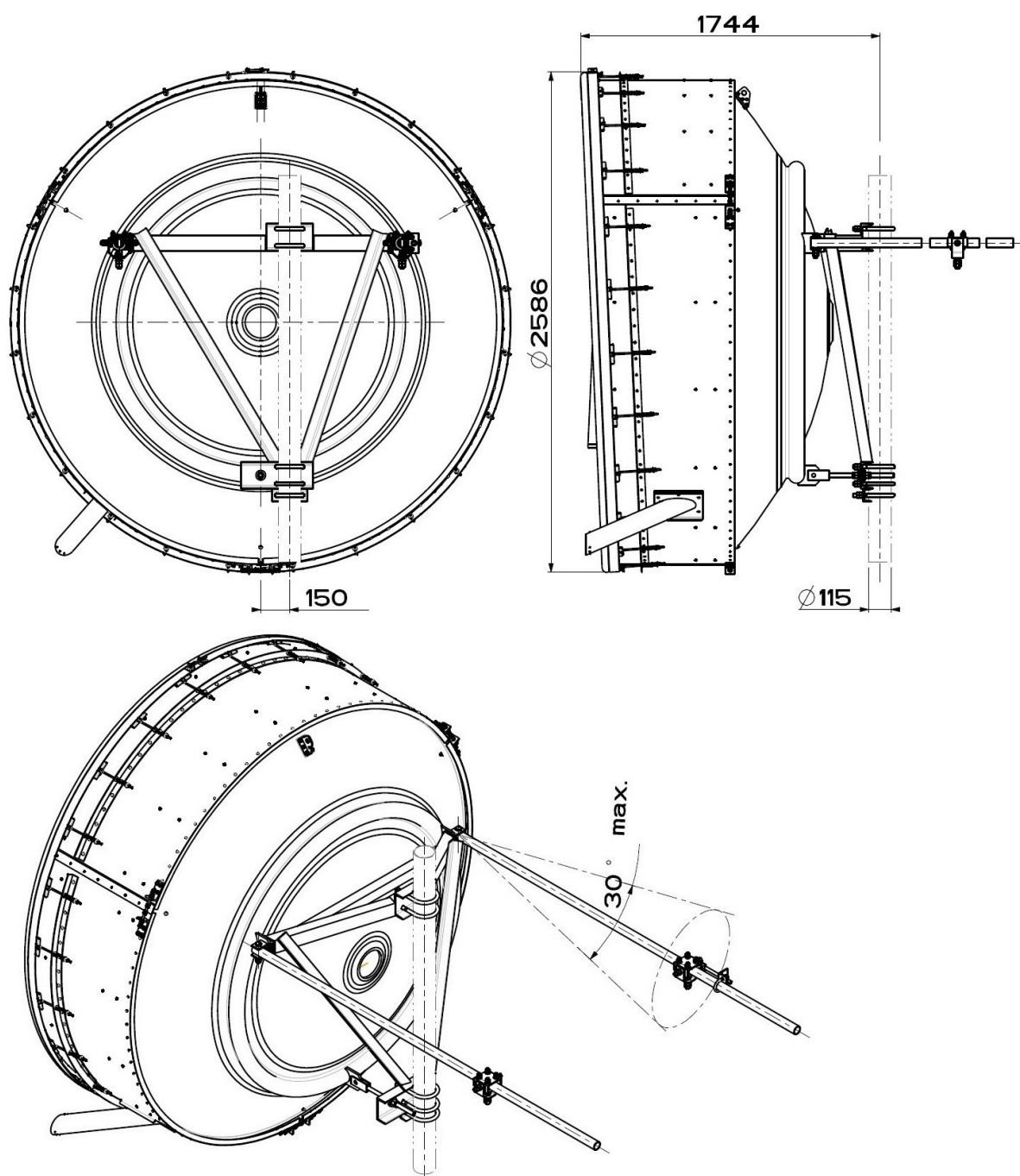
## Mechanical Characteristics

Pole	115 mm
Elevation-fine adjustment	+/- 5 deg
Azimuth-fine adjustment	+/- 5 deg
Side struts, included	2
Side struts, optional	0
Net weight	250 kg
Radome	Complan fabric
Wind velocity Operational	30 m/s
Wind velocity Survival	55 m/s
Wind deflection	<0.3 times the -3 dB beamwidth
(with a wind velocity of 30 m/s)	Specified wind deflection applies for 115 mm dia mounting pipe only

## Antenna Dimensions

(pole mount included)

Height	2586 mm
Width	2586 mm
Depth	1744 mm



## ▣ Wind forces at wind velocity survival rating and with 25 mm (1") ice load

Axial force	12750 N
Side force	6315 N
Twisting Moment	5220 N*m

Maximum forces exerted on a supporting structure as a result of wind (survival rating) from the most critical direction for each parameter. These values may not occur simultaneously. All forces are referenced to the mounting pipe (diameter 115 mm)

## ▣ Electrical Characteristics

Frequency range	4.4-5 GHz
Gain, low band	38.3 dBi
Gain, mid band	38.8 dBi
Gain, top band	39.3 dBi
Return Loss	30.7 dB
VSWR	1.06
HPBW	2 deg
Front to back ratio	64 dB
Isolation	35 dB
XPD	30 dB
Electrical Compliance	ETSI 302 217 Class 3

## ▣ Shipping Information

Gross weight	500 Kg
Height	2850 mm
Depth	2500 mm
Width	970 mm

