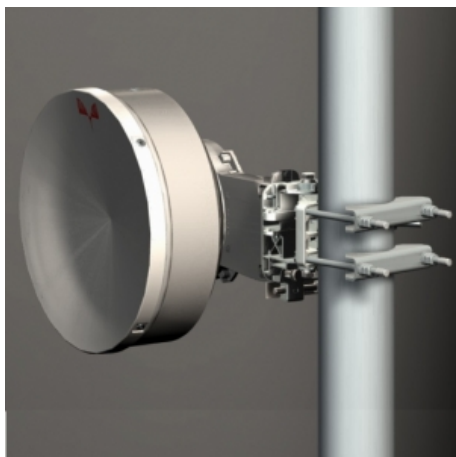


Antenna THP03-177S

Antenna THP03-177S



General Specifications

Diameter	0.3m
Standard Colour	RAL 7035
Shroud	Low profile
Antenna Input	Interface for IEC waveguide R 220
Polarization	Single

Mechanical Characteristics

Pole	50-115 mm
Elevation-fine adjustment	+/- 15 deg
Azimuth-fine adjustment	+/- 20 deg
Side struts, included	0
Side struts, optional	0
Net weight	8.5 Kg
Radome	Rigid plastic
Wind velocity Operational	45 m/s
Wind velocity Survival	70 m/s
Wind deflection	<0.3 times the -3 dB beamwidth
(with a wind velocity of 45 m/s)	Specified wind deflection applies for 115 mm dia mounting pipe only

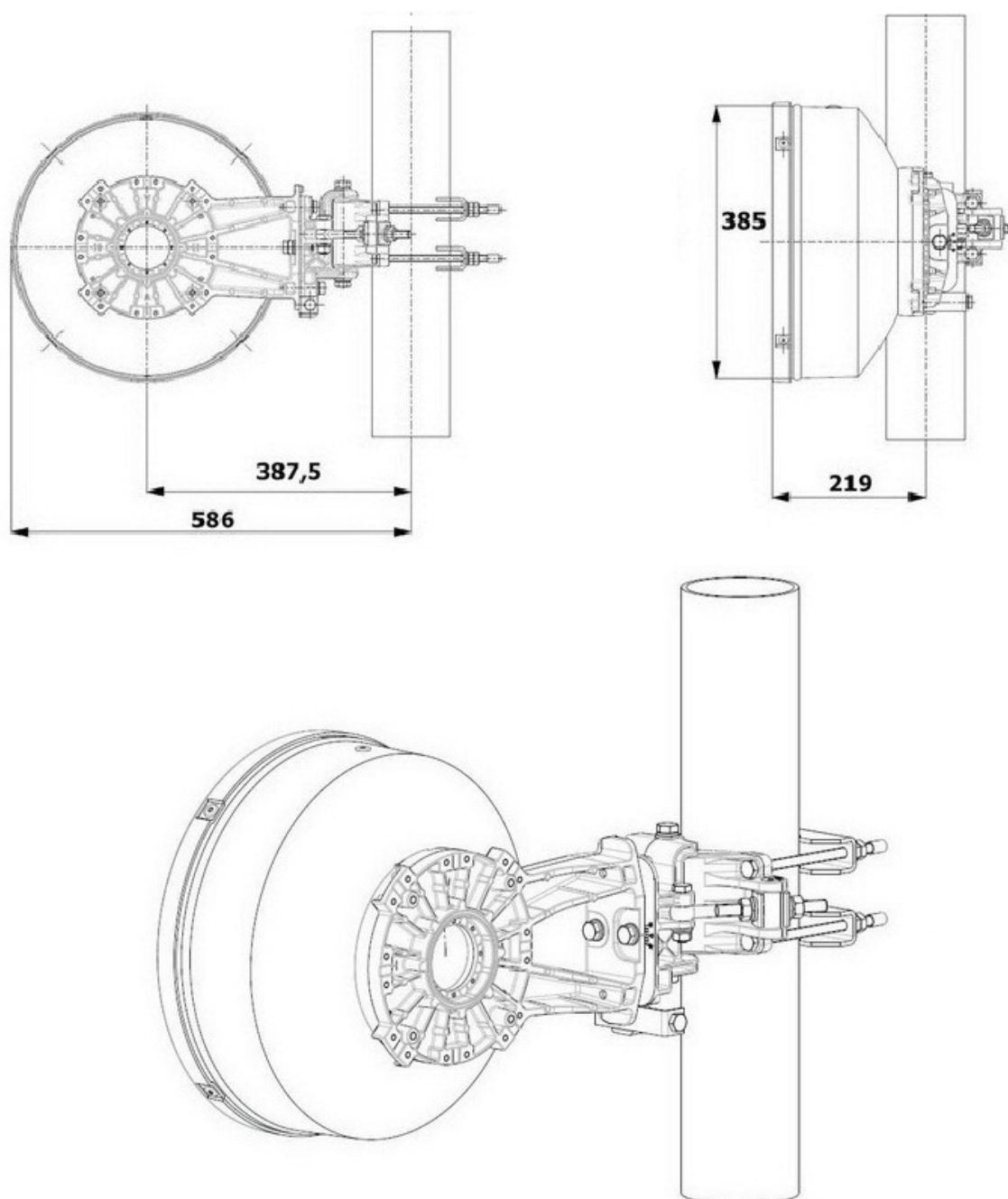
Antenna Dimensions

(pole mount included)

Height 385 mm

Width 586 mm

Depth 219 mm



Wind forces at wind velocity survival rating and with 25 mm (1") ice load

Axial force	472 N
Side force	234 N
Twisting Moment	167 N m

Maximum forces exerted on a supporting structure as a result of wind (survival rating) from the most critical direction for each parameter. These values may not occur simultaneously. All forces are referred to the mounting pipe of 115 mm diameter.

Electrical Characteristics

Frequency range	17.7 - 19.7 GHz
Gain, low band	34.1 dBi
Gain, mid band	34.5 dBi
Gain, top band	35.0 dBi
Return Loss	17.7 dB
VSWR	1.3
HPBW	3.3 deg
Front to back ratio	58 dB
Isolation	NA
XPD	30 dB
Electrical Compliance	ETSI 302 217 Class 2 ; Anatel Ato 932 Class 2a
	ETSI 302 217

Shipping Information

Gross weight	11 Kg
Height	300 mm
Depth	400 mm
Width	600 mm

